

# My visit to GoggleWorks Center for the Arts



**gg** **GoggleWorks Center for the Arts**  
201 Washington Street, Reading, PA 19601  
[goggleworks.org](http://goggleworks.org) • 610.374.4600

Soon I will visit GoggleWorks.



Main entrance



Washington St. entrance

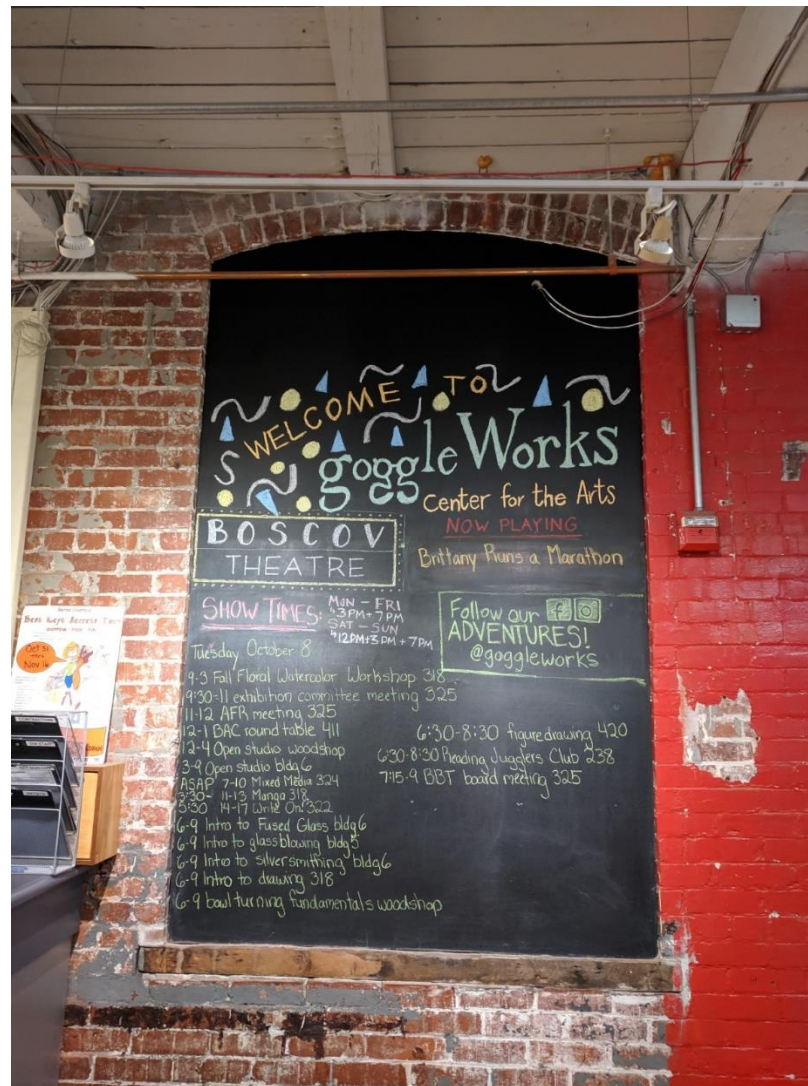
I will enter through the main entrance by the parking lot or through the Washington St. entrance.



When I enter the **arts center**, a Community Ambassador at the front desk will greet me.

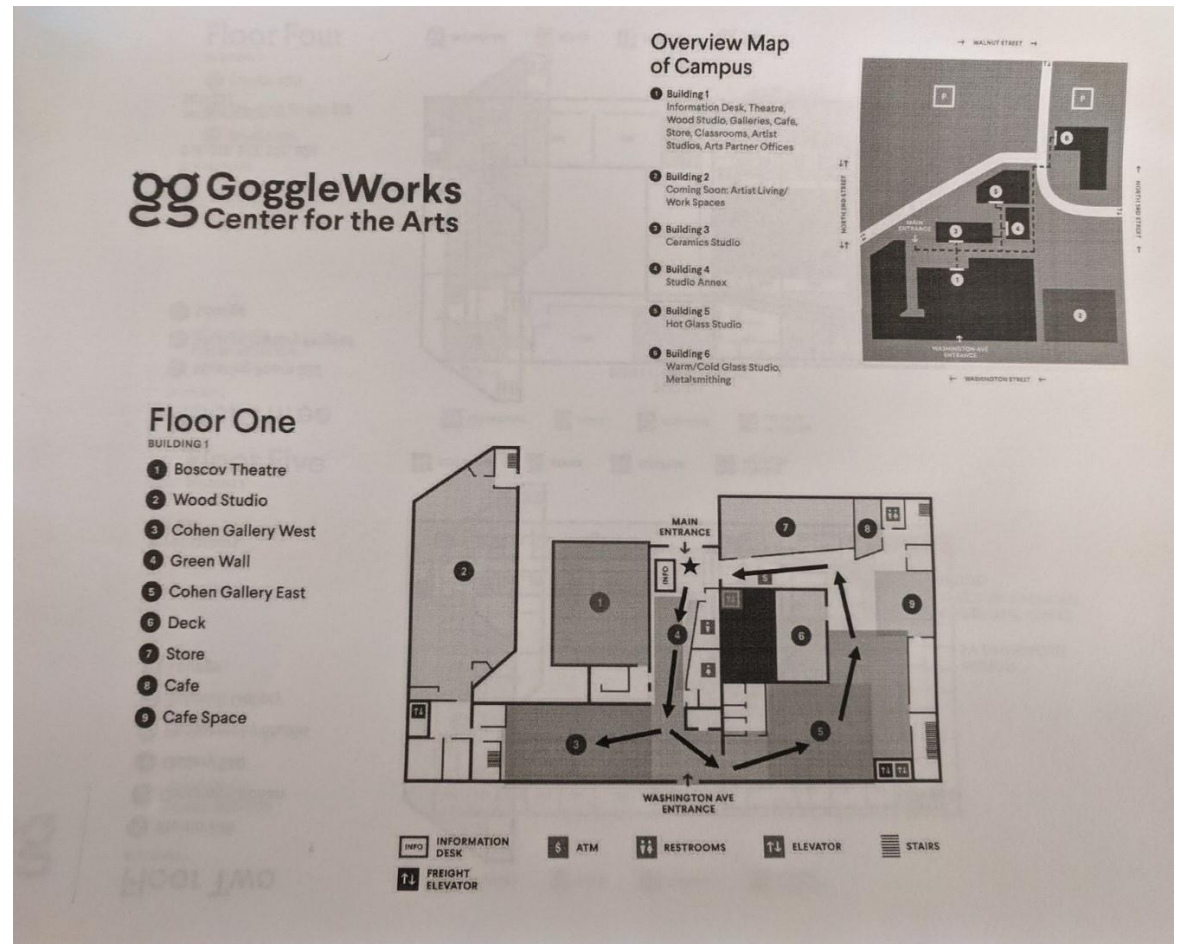


The **chalkboard calendar** in the lobby lists all classes and meetings happening today.



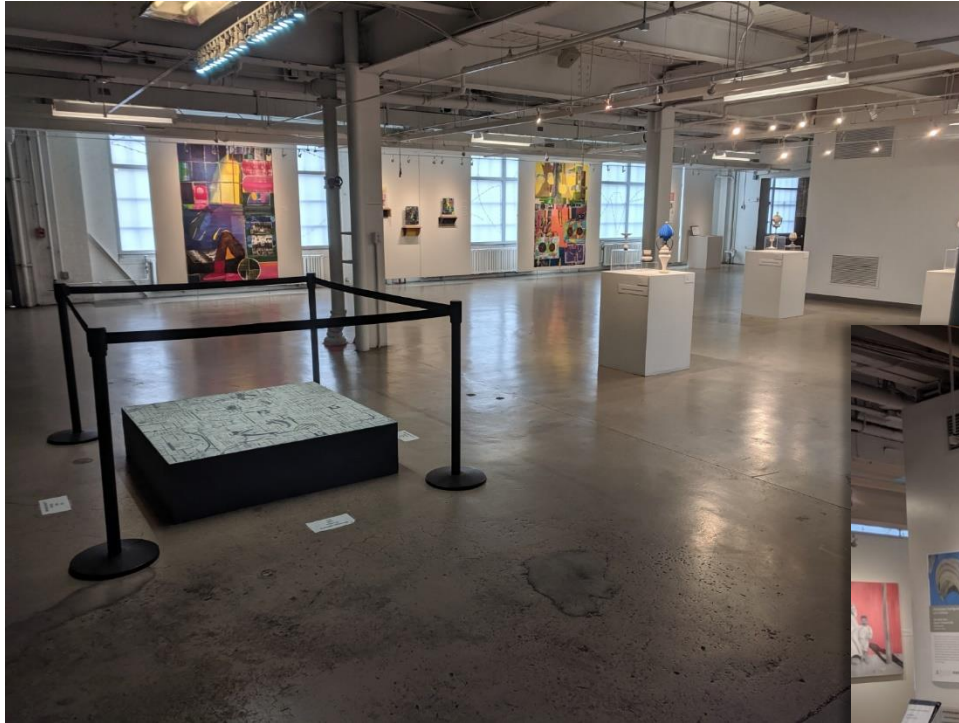
The arts center is a **BIG** place.  
It's important to **stay together** with my group.

Together we will  
decide where to  
**explore**. We can  
pick up a map at  
the front desk.

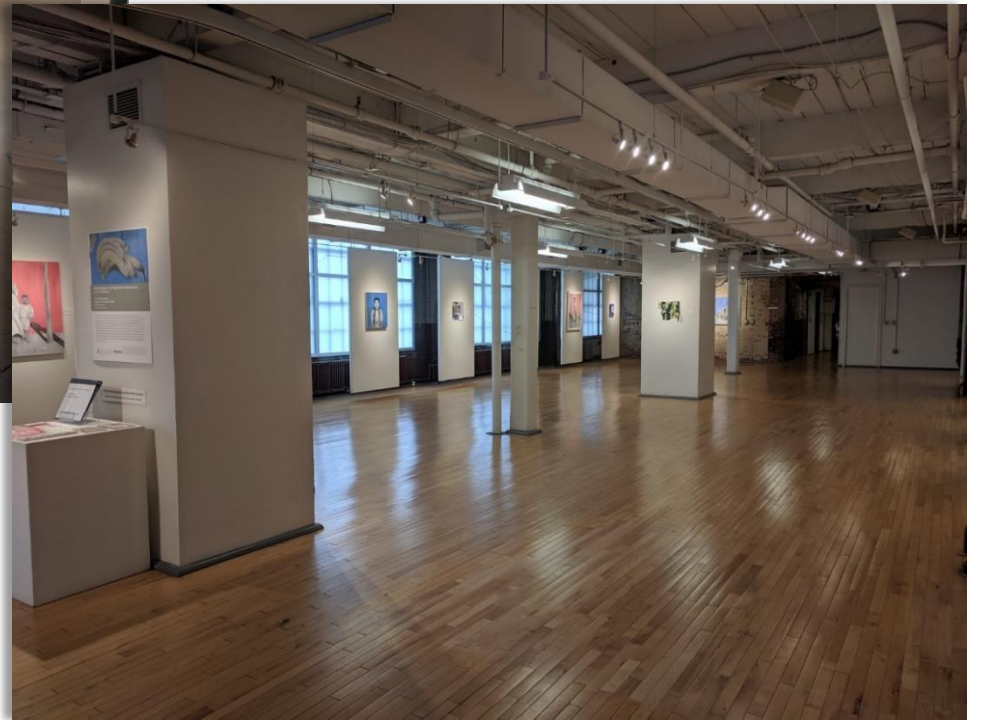




Located on the first floor are the Cohen Galleries:  
gallery east and gallery west.



Cohen Gallery East



Cohen Gallery West

In the galleries, I can **LOOK** and **TALK** about the art.

To keep the art safe, I want to keep my distance from  
the art and my hands to myself.  
Touching can harm the art.



Walk through Cohen Gallery West to find the entrance to the **Woodshop**.



When people are working, this area can get loud.



I may run into **Luke**, the Woodshop Studio Manager.



To **explore** more of GoggleWorks, I can take an elevator or the stairs.

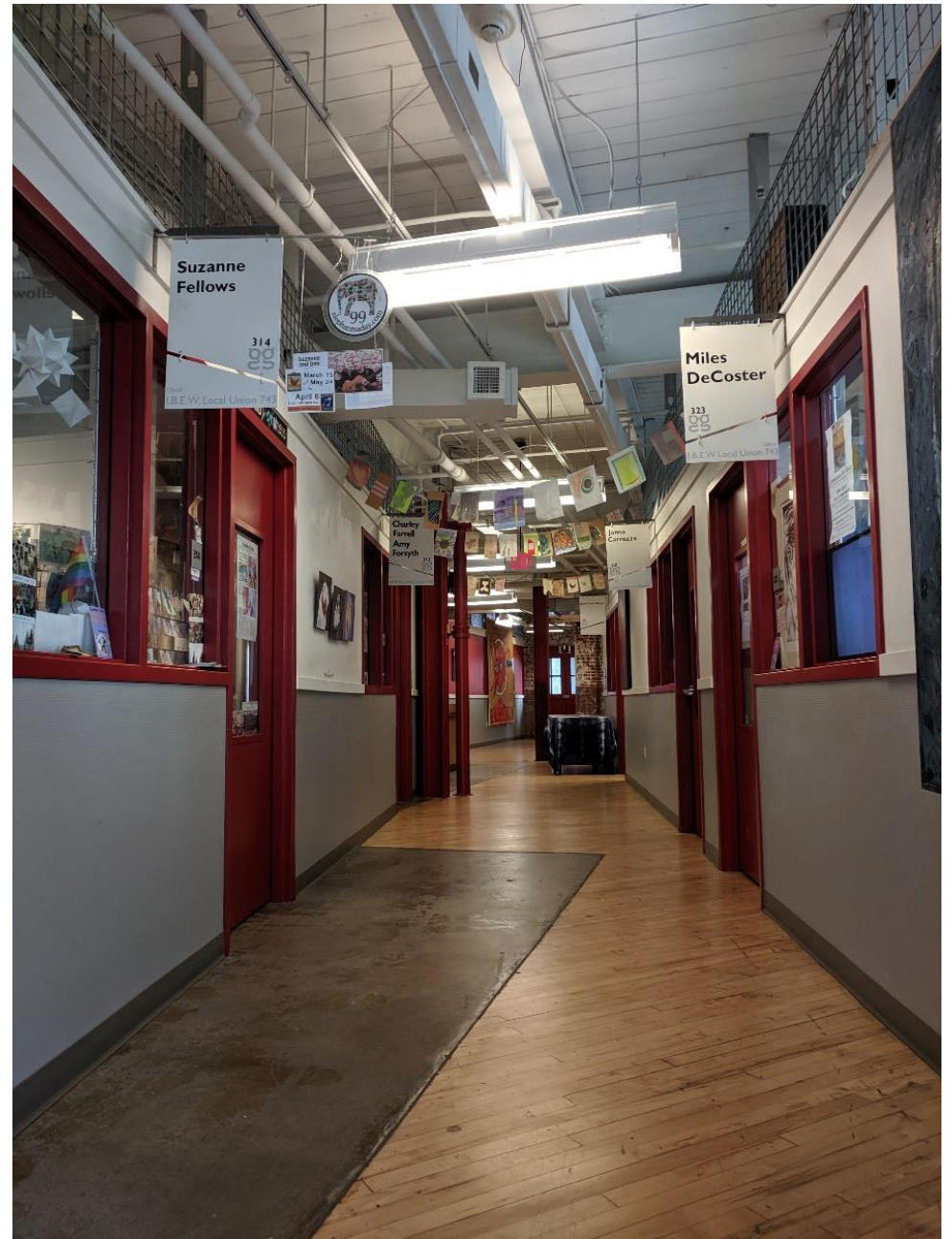
There are 2 elevators & 3 sets of stairs.





Visit the 2<sup>nd</sup> and 3<sup>rd</sup> floors  
to find the **Studio Artists**.

There are around  
**15 studios** on each floor.



When the artist's door is open, you are **welcome** to go inside, look at the art, and **ask questions** about how the art is made.





**Learn** why we're called GoggleWorks in the Willson History Project on the 3<sup>rd</sup> floor.



While at the arts center,  
I will use my **inside voice** and **walking feet**.



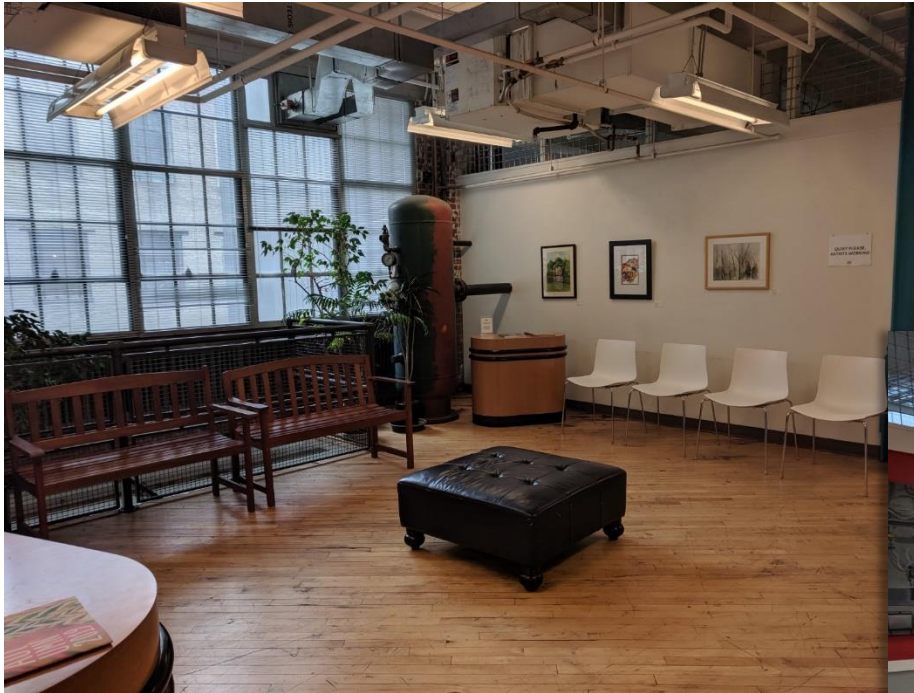
I want everyone at GoggleWorks to enjoy their visit.



Bathrooms are located on **each floor**  
at GoggleWorks.



There are quiet lounge spaces on the 2<sup>nd</sup> and 3<sup>rd</sup> floors where I can take a **break and relax**.



2<sup>nd</sup> floor lounge



3<sup>rd</sup> floor lounge



Outside the main entrance is the  
Ceramics Studio, Building 3.



I might run into **Ben**, the Ceramics Studio Manager.





You will see **BLUE** and **RED** footprints on the ground outside the main entrance.





I can follow the **RED** footprints to the  
Glassblowing Studio.





I might see **Scott**, the Glassblowing Studio Manager.



Follow the **BLUE** footprints to the Warm Glass Studio.





I may see Maggie, the Warm Glass Studio Manager.



If I have a question, I can ask staff or the Community Ambassador at the front desk by the main entrance.



I may not be able to see everything this visit.  
That's OK. I can come back another day to **explore**  
**GoggleWorks** more.